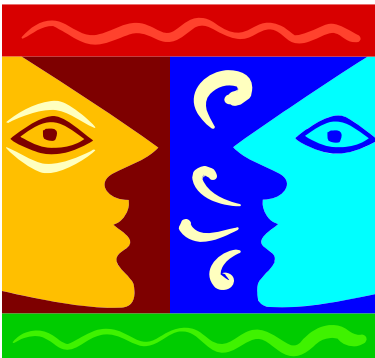


SPAHQ

Southeastern Pennsylvania Association for Healthcare Quality



Invites you to attend the Annual **Business Meeting and Winter Mini-Conference**
“Seeing and Relating to Your Team Through Your “Color” Temperament”

When: Thursday, March 18, 2010

Where: ABC

588 North Gulph Rd

King of Prussia, PA 19406

Easy access from I-276, I-476, or Expressway.

(Building is across from the Quality Insights Office at 630 Freedom Business Center) Park at 630 Freedom Business Center lot and walk across to the ABC building where the cafeteria is.

SPAHQ: March 18, 2010

AGENDA

- | | |
|----------------------------|---|
| 8:30 am – 9:00 am | Registration and Breakfast |
| 9:00 am – 9:15 am | Election Results and Induction of Officers |
| 9:15 am – 10:15 am | Committee Reports |
| 10:15 am – 10:30 am | Break |
| 10:30 am - 12:30 pm | <i>“Seeing and Relating to Your Team
Through Your “Color” Temperament”</i> |

Presenter: Carolyn J. Hann, RN, MSN, CPHQ

About the Speaker –

Carolyn is a Project Coordinator for Quality Insights of Pennsylvania working with the Nursing Home Initiative. In this role she supports long term care facilities in facilitating improvement in quality of care, improving their quality measure outcomes, and focuses on leadership and team building. She is a certified trainer for “Introducing You to You” Color personality workshops through New Directions Consulting, Inc. She has over forty years of clinical practice and management in acute care, long term care, utilization management, case management, and quality improvement.

She is President of the Southeastern Pennsylvania Association for Healthcare Quality and is a member of the National Association for Healthcare Quality. She has taught on the college level and presented to professional organizations.

Seeing and Relating to Your Team Through Your “Color” Temperament

Upon completion of the program, the participant will:

- 1. Identify your characteristics when working with teams based on your primary and secondary colors.**
- 2. Interpret primary and secondary color differences related to your interactions with other team members**
- 3. Differentiate how primary and secondary colors of other team members impact your color characteristics and performance.**

SPAHQ:

Southeastern Pennsylvania Association for Healthcare Quality

REGISTRATION FORM

ANNUAL BUSINESS MEETING AND WINTER MINI-CONFERENCE

Name _____

Organization: _____

Address: _____

.....

City: _____ State: _____ ZIP: _____

Phone: (_____) _____

Please register by Friday, March 12, 2010

Fax registration form to:

610-265-3909 Attention: Toni Daly or Deb Getman

Email Registration to:

mdaly@wmvi.org or dgetman@wvmi.org

For additional information, please contact Toni Daly at 877-346-6180 x 7843

If you will need special accommodations, call us prior to the date of the program.

This activity has been approved by the National Association of Healthcare Quality for 2 CPHQ CE credit.